

# FIVE APPROACHES TO RESTORATIVE PRACTICES

We define **Restorative Practices** as a process by which an individual acknowledges wrongdoing, takes steps to **repair harm** and is welcomed back into the **school community**. This fosters a culture that elevates dialogue and values relationships.

Our Five Strategy approach builds Restorative Practice skills within a school and shapes the internal culture—shifting to more restorative approaches.

## ASSESSMENT

1



Our consensus-based assessment tool allows us to understand the infrastructure, leadership, culture and protocols unique to each school.

With insight from the assessment data, we create a tailored road map, identifying the school's assets, needs and priorities to move forward with successful Restorative Practices implementation.

## PRIORITIZATION & PLANNING



2

With insight from the assessment data, we create a tailored road map, identifying the school's assets, needs and priorities to move forward with successful Restorative Practices implementation.

## PRIORITIZATION & PLANNING



2

## TRAINING

3



Our training is always customizable and built on the specific needs of the school to create a sustainable Restorative Practices culture within the school. Please see other side for training descriptions.

We work alongside and empower selected staff to link Restorative Practices to the goals of the school through a process of creating a vision, overcoming roadblocks and developing new skills.

## COACHING



4

We work alongside and empower selected staff to link Restorative Practices to the goals of the school through a process of creating a vision, overcoming roadblocks and developing new skills.

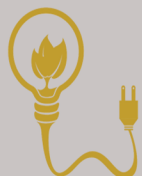
## COACHING



4

## SUSTAINABILITY

5



The overall focus of our approach is to build capacity. We work with school leaders to maintain and institutionalize Restorative Practices by integrating its practices into the classroom, discipline system, school policies and overall school culture.

## SUSTAINABILITY

5



The overall focus of our approach is to build capacity. We work with school leaders to maintain and institutionalize Restorative Practices by integrating its practices into the classroom, discipline system, school policies and overall school culture.

## CONTACT US

303.433.4983 | [INFO@CONFLICTCENTER.ORG](mailto:INFO@CONFLICTCENTER.ORG)  
[CONFLICTCENTER.ORG](http://CONFLICTCENTER.ORG) | 4140 TEJON DENVER, CO 80211

## CONTACT US

303.433.4983 | [INFO@CONFLICTCENTER.ORG](mailto:INFO@CONFLICTCENTER.ORG)  
[CONFLICTCENTER.ORG](http://CONFLICTCENTER.ORG) | 4140 TEJON DENVER, CO 80211

## GOALS OF OUR FIVE-STRATEGY APPROACH

- ✦ Understanding and awareness of Restorative Practices for schools leaders and staff
- ✦ Increasing the capacity of school leaders to implement and maintain policies promoting Restorative Practices
- ✦ Advancing the capability of school leaders and staff to build and implement Restorative Practices infrastructure
- ✦ Creating the capacity for schools to measure their progress on discipline where Restorative Practices are being implemented.
- ✦ Supporting the school's capacity to sustain Restorative Practices.

## GOALS OF OUR FIVE-STRATEGY APPROACH

- ✦ Understanding and awareness of Restorative Practices for schools leaders and staff
- ✦ Increasing the capacity of school leaders to implement and maintain policies promoting Restorative Practices
- ✦ Advancing the capability of school leaders and staff to build and implement Restorative Practices infrastructure
- ✦ Creating the capacity for schools to measure their progress on discipline where Restorative Practices are being implemented.
- ✦ Supporting the school's capacity to sustain Restorative Practices.

## RESTORATIVE PRACTICE TRAININGS

- 101 5 R's of Restorative Culture: An Intro to Restorative Practices in Schools**
- This introductory training provides attendees with baseline understanding as well as knowledge about how Restorative Practices can transform any situation.

- 201 Implementing Restorative Circles in Your School**
- With an emphasis on prevention, we'll learn to use restorative practices skills to develop collaborative norms, how to use affective statements and how to facilitate pro-active circles.

- 301 Sustaining a Restorative School Culture**
- Focusing on the intervention aspect of restorative practices, especially when conflict arises, we'll practice the skills required to address situations using an intentional facilitation process.

\*OUR TRAININGS ARE CUSTOMIZABLE TO YOUR SCHOOL'S NEEDS. CALL 303.865.5621 TO REGISTER FOR A CLASS TODAY.

STAY IN THE LOOP



## RESTORATIVE PRACTICE TRAININGS

- 101 5 R's of Restorative Culture: An Intro to Restorative Practices in Schools**
- This introductory training provides attendees with baseline understanding as well as knowledge about how Restorative Practices can transform any situation.

- 201 Implementing Restorative Circles in Your School**
- With an emphasis on prevention, we'll learn to use restorative practices skills to develop collaborative norms, how to use affective statements and how to facilitate pro-active circles.

- 301 Sustaining a Restorative School Culture**
- Focusing on the intervention aspect of restorative practices, especially when conflict arises, we'll practice the skills required to address situations using an intentional facilitation process.

\*OUR TRAININGS ARE CUSTOMIZABLE TO YOUR SCHOOL'S NEEDS. CALL 303.865.5621 TO REGISTER FOR A CLASS TODAY.

STAY IN THE LOOP

